

# PRODUCT DATA SHEET

## CLIMPING TOOLS FOR NON-INSULATED CORD END TERMINALS



### DESCRIPTION

Crimping Tools For Ferrule, is a handheld motion crimping tool for lanyard end ferrule terminals. This ergonomically friendly crimper is designed to provide a consistent and reliable crimp.

### FEATURES

- Reduce energy by 50% when spinning.
- Lightweight and compact structure maintains the crimping effect.
- Reproducible and high crimping quality thanks to integrated lock.
- Ergonomic Handle Design provides improved gripping power.
- High quality crimping standard.

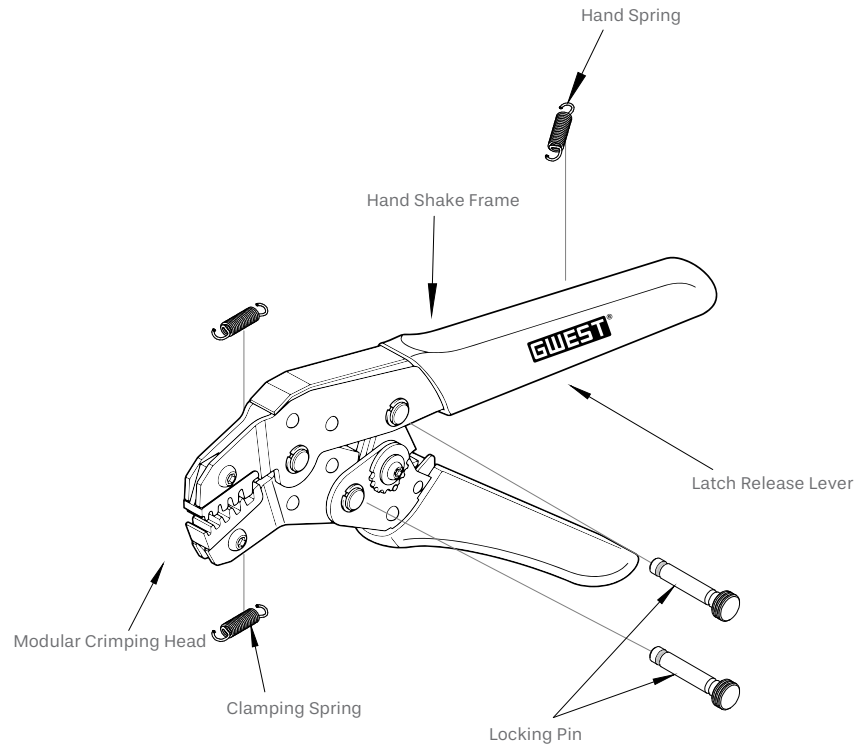
### USAGE AREAS



# PRODUCT DATA SHEET

## CLIMPING TOOLS FOR NON-INSULATED CORD END TERMINALS

### SECTIONS AND DIMENSIONS



| PRODUCT CODE | DESCRIPTION   |
|--------------|---|
| GW - 11      | 0.50 - 6 mm <sup>2</sup> Non-Insulated Terminal Crimping Tool |